

# Advancing HIE in Washington State DRAFT Technology Requirements

Presented to:  
Stakeholder Participants  
November 2009

Sue Merk, SVP, OneHealthPort, 206-624-3128  
[smerk@onehealthport.com](mailto:smerk@onehealthport.com)

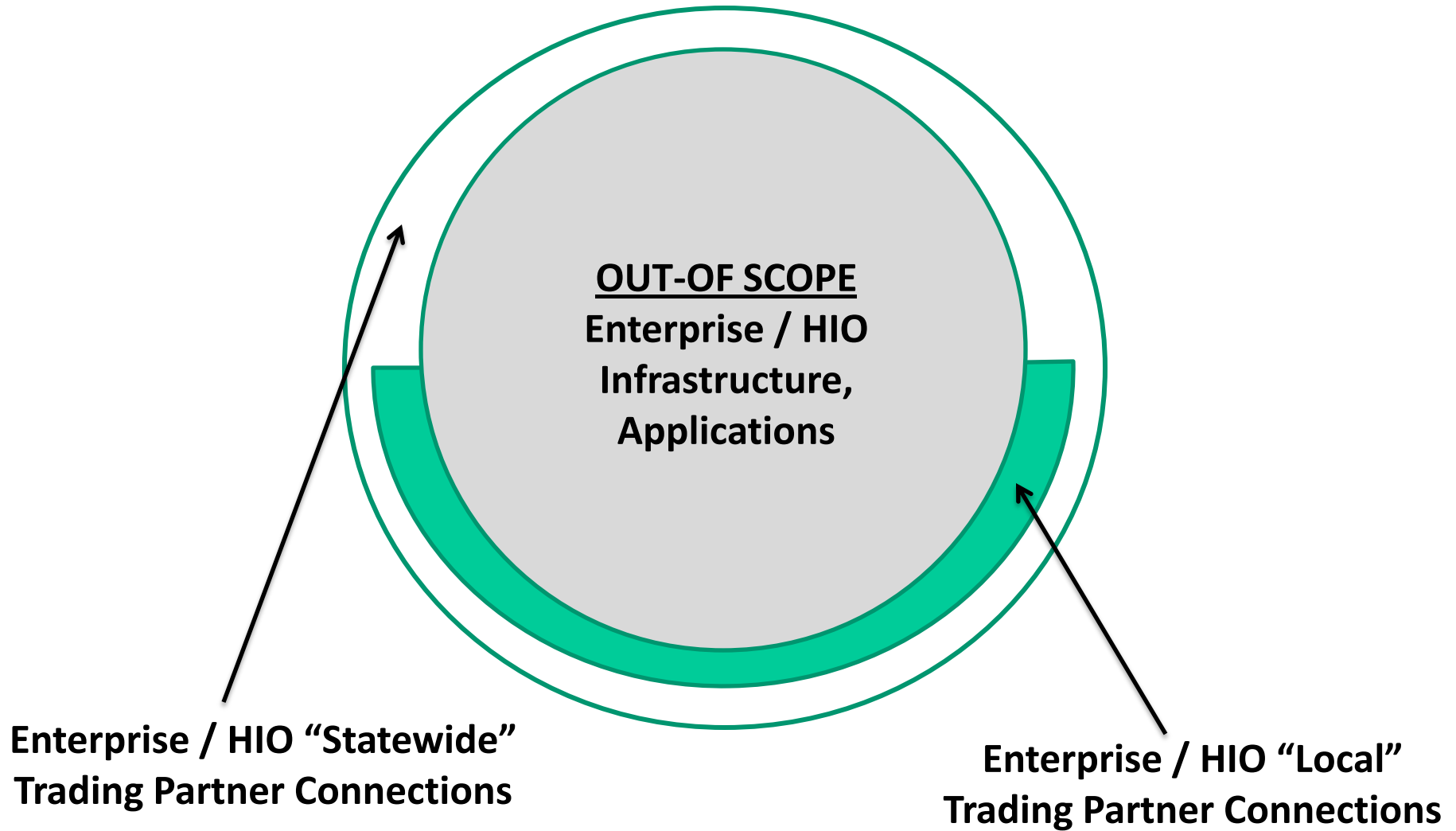
# What We Will Cover

- Assumptions for approach
- Service Components for HIE architecture
- Data Types to be exchanged
- Assumption of Phase I focus
- Validation and Feedback on Assumptions
  - If you are viewing this on the website and would like to offer your feedback, use the website link to add your feedback

# Assumptions

- The market is not ready to consume, can not afford and is not ready to implement all of the services at once.
- A phased approach allows planning/implementation based on what's needed first over a multi-year project.
- While global planning needs to consider when each service will be implemented, detailed plans should be broken into phases based on an active implementation of a service or new data set.

# Focus on the Thin Layer – Shared Infrastructure



# Think about it..

# Tnihk auobt it

- The next slides outline the major service components and data types we are proposing be a part of the HIE over the next five years.
- Are these the right components and types for the HIE — considering the thin layer we have targeted.
  - What are you willing to pay for this technology layer?
  - When will you be ready to use various components?
  - How many transactions will you push or pull via these components?

# Services Components

- Hub – central connectivity – connect once
- Data Standards – leverage HITSP
- Security and Privacy Policies
- Secure Messaging – sneaker network for those not ready for full system to system transactions
- Directory Services – find trading partners
- Data Transformation Services – harmonization tools
- Data Repository – store data for any willing customer
- Master Person Index/Record Locator Service – matching/finding patient records
- HIE Administration
- Out of Scope - applications

# Data Types

- Lab Results
- Pharmacy history, drug formulary, benefits
- Radiology Images and Reports
- Episode/Encounter documentation
- Allergies and problem list
- CPOE - orders
- Eligibility/benefits data
- Immunizations
- Unstructured messages

# WHAT depends on What

- What services are needed and when is driven by the business use cases and the order they will be implemented. ( Form follows function)
- Implementation View forces the question of what are we deploying first to drive what services are needed first.
- Some of the “What” and timelines is driven by Federal Funding but more importantly – community commitment to sustain the infrastructure and use it.

# Federal Commitment

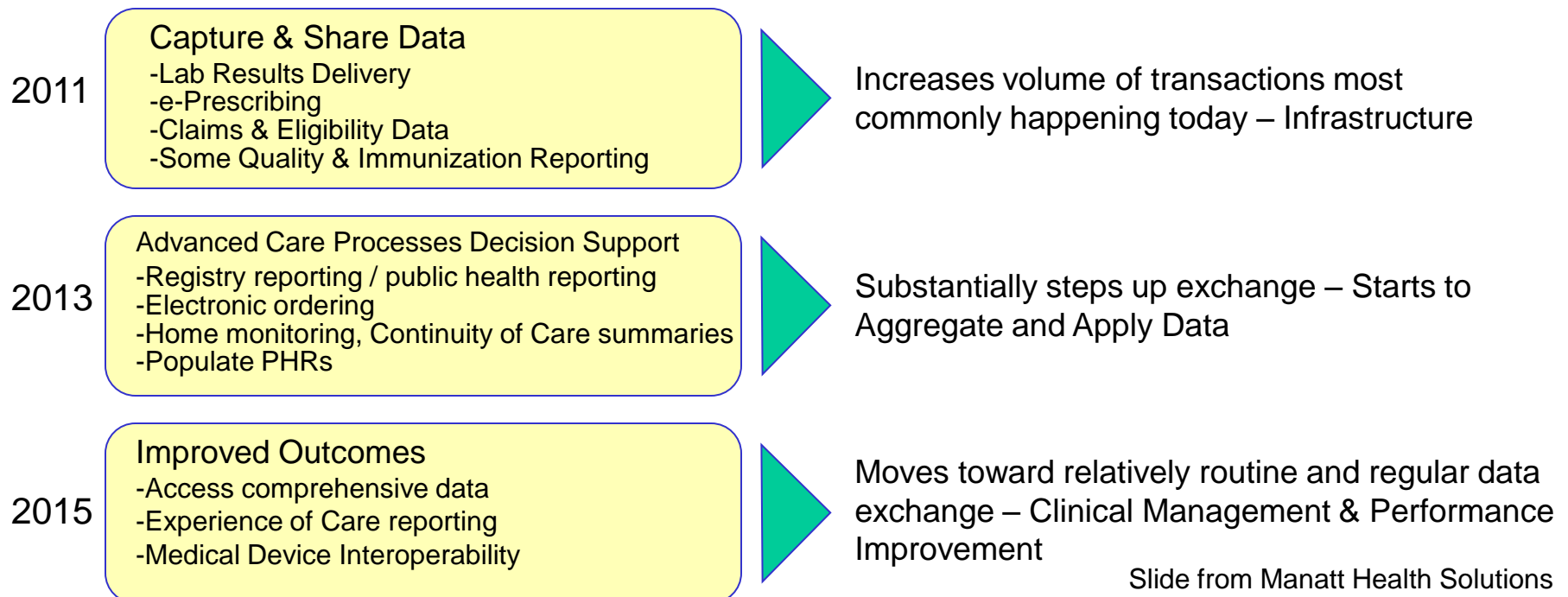
## \$44 Billion for Incentives

### Vision of Meaningful Use

“To enable significant and measurable improvements in population health through a transformed health care delivery system.”

### Key Goals

- Improve quality, safety, & efficiency
- Engage patients & their families
- Improve care coordination
- Improve population and public health
- Reduce disparities
- Ensure privacy and security protections



# Building the Infrastructure...

## The Capacity for Meaningful Use

© Cartoonbank.com



*“Someday, all this will be infrastructure.”*

# Quick Hits to Build Momentum

- Starting with a few transactions that can get meaningful use right away helps meet requirements of various types
  - Market business needs
  - Federal grant expectations
- Parallel paths to identify next areas of readiness
  - Readiness is a combination of:
    - data value,
    - data standards,
    - willing trading partners,
    - volume of transactions

# Assumption Validation

- Is a phased approach the correct model for 2010 initial work plan focus?
  - Yes – our organization supports this
  - No – this is not enough – would like to see more
  - Neutral – not ready for phase 1 regardless of services offered

# High Value Data

- What Data Sets are you ready to consume and buy with your “community investment” dollars.
  - Think about a particular data set you would want in an initial phase and how this would help your organization
  - Vote by spending your dollars
  - You can spend all or part of your dollars on one or more data types you want to see in phase 1 because you are ready to buy it with your real budget dollars as soon as it is available.
  - If not ready or interested in any data types, vote accordingly

# Buy a Service

- What service components are you ready to consume and buy with your “community investment” dollars.
- Think about particular service components you want as a first step
  - Vote by spending your dollars
  - You can spend all or part of your dollars on one or more service components you want to see in phase 1 because you are ready to buy it with your real budget dollars as soon as it is available
  - If you are not ready or interested in any service components, vote accordingly